

Socket CompactFlash Scan Card 5M



Turn Your Pocket PC, Handheld PC, Pen Tablet or Notebook into a **Mid-Range** Mobile Bar Code Scanner

If you're a mobile professional using a Pocket PC, Handheld PC or Windows notebook for an application requiring Mid-Range data entry, Socket's CompactFlash (CF) Scan Card 5M may provide an incredible increase in productivity.

Virtual keyboards and handwriting/voice recognition are slow, error-prone methods of entering data into mobile computers. If the data to be entered is bar coded, using a laser scanner is 50 times faster and 10,000 times more accurate than manual data entry.

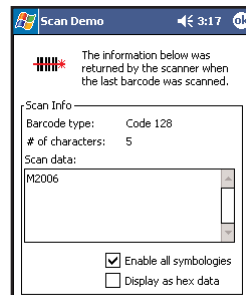
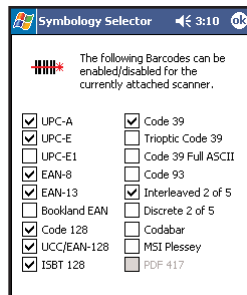
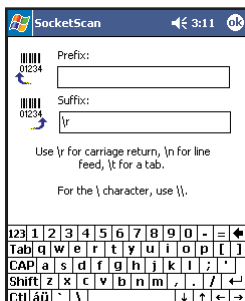


Socket's CF Scan Card 5M brings a new level of convenience and portability to mobile data collection by combining Socket's Mobility Friendly™ CompactFlash technology with the world's smallest and lightest laser scanner engine from Symbol Technologies. Just plug the card into your Windows-based mobile computer, launch the included SocketScan™ software, and read bar code data into any Windows application as if it had been typed on a keyboard. "Fuzzy logic" technology enables the reading of damaged, poor quality or hard-to-read bar codes.



Mobility Friendly Means Low Power

Socket designed the Mobility Friendly CF Scan Card to use minimal power. Drawing only 4 mA (13 mW) in idle mode, the CF Scan Card lets you operate for hours without having to replace or recharge your mobile computer's batteries.



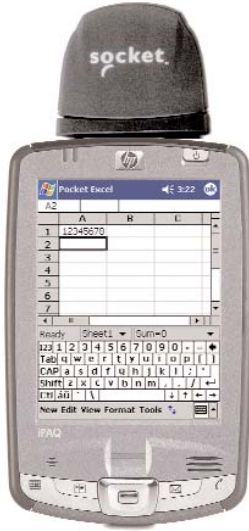
FEATURES

- Type II CF card with integrated laser scanner plugs into Type II CompactFlash slot of a Pocket PC or mobile computer
- With CompactFlash-to-PC Card adapter (SKU# AC4001-515), works in PC Card (PCMCIA) slot of devices mentioned above (if applicable) or a Windows XP notebook*
- One-handed operation with a Pocket PC or mobile computer improves efficiency
- Uses state-of-the-art Class 1 824 laser scanner engine from Symbol Technologies. This is the smallest laser scan engine available today
- "Fuzzy logic" enables the reading of damaged, poor quality, and hard-to-read bar codes
- SocketScan keyboard emulation software works on Windows Mobile for HPC 2000 or Pocket PCs as well as Windows XP
- SocketScan allows the user to add Prefix and/or Suffix functions, such as Carriage Return and Tab, to further eliminate manual keystrokes
- SocketScan enables you to assign a scanner trigger button, and also a beep tone or .WAV file to signify a successful scan
- Any of 18 bar code symbologies can be easily enabled/disabled with SocketScan's "Symbology Selector"
- SocketScan "Scan Demo" reports symbology, length and decoded data (in ASCII or Hex) of any scanned bar code (of 19 supported symbologies)
- No extra batteries or special power adapter required — the ISC gets power from the mobile computer
- Works with Windows-based development tools so you can easily create custom applications
- SDK available to application developers



Socket CompactFlash Scan Card 5M

Product # IS5025-609



socket



Manicon Technology Limited

Unit 12, 8/F, New City Centre, Kwun Tong, Kowloon, Hong Kong

Tel: 2836-3162 Fax: 2836-3093

E-Mail: sales@manicon.com

Web Page: <http://www.manicon.com>

SPECIFICATIONS

Physical Characteristics:

CF Card Size: 43 x 43 x 5 mm

Scanner Head Size: 83 x 51 x 20 mm

Total Mass: approx. 34 g

Power Consumption (with 3.3V):

Idle: 4 mA (13 mW)

Scanning: 135 mA (446 mW)

(Also operates on 5V supply)

Bar Code Symbologies Decoded:

Code 39, UPC/EAN/JAN, MSI, Code 128, Code 93, Codabar, Interleaved 2 of 5, Discrete 2 of 5, RSS-14, RSS-Limited/Expanded Stacked

Operating System Support:

- Windows Mobile for Pocket PC 2000/2002/2003 and HPC 2000
- Windows XP

Compatibility: Windows COM Port

Class 1 Decode Distances:

2.2 to 30+ inches (depending on symbol size, symbology, label media, W-N Ratio, and scan angle)

Environmental Conditions:

Operating Temp:

-4° to 131° F (-20° to 55° C)

Storage Temperature:

-40° to 140° F (-40° to 60° C)

Humidity: 5-95% non-condensing

Certification:

FCC: Part 15, Class B

CE: EN55024:1998, C-TICK s.182

CompactFlash Spec. 2.0

Laser: SE 824 Class 1 laser

Interface Standards:

- CompactFlash (CF) Type II
- PC Card (PCMCIA) with Type II CF-to-PC Card adapter, available separately: Product # AC4001-515

SocketScan™ Software:

- Reads bar code data into any Windows application as if manually typed
- Lets you add Prefixes and/or Suffixes (e.g., Carriage Return) to further reduce manual keystrokes
- Lets you assign a beep tone or .WAV file to signify a good scan
- Lets you easily enable/disable any of 18 common symbologies
- Scan Demo reports symbology, length and decoded data (in ASCII or Hex) of any scanned bar code (for 18 supported symbologies)
- SDK available for developers

Class 1 Laser Decode Zone

Note: Guaranteed performance at 73° F (23° C) on high quality symbols.

