

TS-910

POS Touch Screen Terminal



POS is our business

The NEW Retail/Hospitality All-in-One TS-910 POS Touch Screen Terminal has the smallest footprint yet biggest features on the market.



58mm Thermal Printer

Laser Scanner

Choose from a vast array of add-on modules including:



26 Button Keyboard



Biometric Fingerprint Scanning



RFID Technology



Integrated Omni-directional Laser Scanner



Integrated 58mm Thermal Receipt Printer



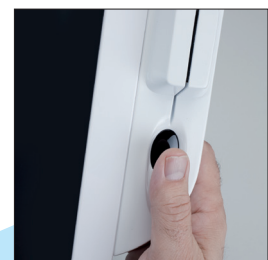
Integrated OOH Digital Advertising



Magnetic Card Reader



Memory Card



Fingerprint Scanner



Specifications

- 10" 1024x600 WXGA LCD Panel
- 5-Wire Resistive Touch Panel
- Intel® Atom™ Processor N450 (Single Core, 1.66 GHz)
- Intel® Atom™ Processor D510 (Dual Core, 1.66 GHz)
- GMA 3150 on CPU Graphics
- 64 Bit Instruction Set
- Memory 2GB Max (DDR2-667)
- Intel® NM10 Express Chipset
- Dimensions (mm): W:250 x H:300 x D:220

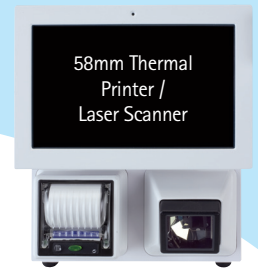
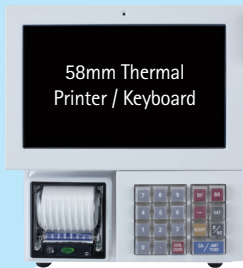
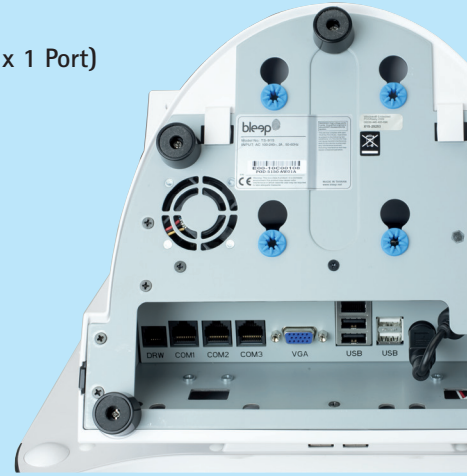
TS-910

POS Touch Screen Terminal



Ports/Connectivity

- 2.5" SATA Hard Disk Drive
- 1 x Compact Flash Port
- 3 x External Serial RS232 Ports
- 3 x Internal Serial RS232 Ports
- 6 x USB 2 Ports
- 2 x Cash Drawer (24v x 1 Port)
- 1 x GB LAN



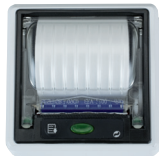
Pick n' Mix any combination, totally versatile... 2 screws... 2 minutes.



RFID Reader



Laser Scanner



58mm Thermal Printer



Magnetic Card Reader and Fingerprint Scanner

Optional Integrated Modules

- i-Button Reader Module
- 2 x 20 VFD Customer Display Module
- 7" USB Powered LCD Customer Video Display
- USB GPRS/3G Data Connectivity
- RFID Reader Module (125 KHz or 13.56 MHz MIFARE)
- 3 Track 43mm Magnetic Card Reader
- Biometric Fingerprint Scanner
- Omni-Directional Laser Scanner
- 58mm Thermal Printer



POS is our business

www.bleep.net